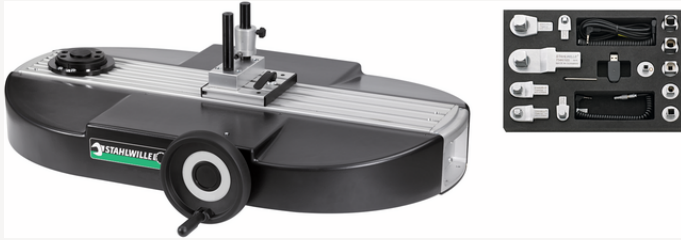


Complete calibration system

7794



Art.No. **96521077**
 GTIN **4018754214662**
 Model **7794-1/1000**

Label.

Complete calibration system Measuring r.1-1000N·m for transducers

Features.

- The electronic perfectControl calibration device with manual drive significantly reduces the effort and time required for calibrations and adjustments of torque wrenches.
- Measurement without shifting the point of application of force
- avoidance of incorrect measurements with the help of the precisely mounted spindle and the ergonomically shaped handwheel
- extremely precise calibration through optimisation of the bearing and the square receptacles of the transducers
- Quick and easy change of transducers due to QuickRelease locking mechanism
- Convenient key operation for clockwise and anticlockwise measurements with automatic speed adjustment
- Time-saving by fixing the bridge support with an eccentric clamp that can be operated with one hand
- transfer of measured values via USB interface to a PC for further processing and archiving
- a calibration certificate can be printed out after calibration or saved as a PDF file
- input and output calibrations can be documented
- DIN EN ISO 6789 is supported in numerous languages during calibration. Other standards and factory specifications on request
- Can be upgraded to perfectControl calibration device no. 7794-3 for angle wrenches
- calibrations up to 1000 N·m with the help of the easy-to-mount extension no. 7791-1
- registered design, patents pending
- triggering and measuring torque spanners can be calibrated
- Calibration of transducers with the aid of torque reference spanners No. 7770-100 and 7770-1000 possible on request
- Included in delivery:
 - 3 transducers
 - 6 calibration square insertion tools No. 734K (sizes 4, 5, 12, 20, 40, 100)
 - 6 square adapters (No. 409M, No. 7787, No. 7788, No. 7789, No. 7789-4, No. 7789-5)
 - 1 USB adapter No. 7757-1

- 1 Torkmaster software no. 7731-1
- 1 jack plug cable No. 7751
- 1 spiral cable no. 775
- 1 spiral cable no. 7751-2 with jack plug and precision plug connector with self-locking mechanism
- 1 cold appliance cable set
- 1 offset screwdriver No. 10760CV SW 2 mm
- delivery without torque spanner and laptop

Advantages.

The electronic perfectControl calibration device with manual drive significantly reduces the effort and time required for calibrations and adjustments of torque wrenches.

Technical Attributes.

Range N·m	1-1000 N·m
Width mm (b)	800 mm
Height mm (h)	820 mm
Length mm (L)	1200 mm

Logistics data.

Depth mm (IFS)	1200
Width mm (IFS)	800
Height mm (IFS)	820
Length (packed, mm)	1200
Width (packed, mm)	800
Height (packed, mm)	820
Volume (packed, dm ³)	787.2 dm ³
Art. no.	96521077
Weight (gross, kg)	102,000
Weight PAP (kg)	0,000
Weight PVC (kg)	0,000
GTIN	4018754214662
Country of origin	GERMANY
Region of origin	Nordrhein-Westfalen
WEEE/ElektroG	Großgeräte B2B
Customs tariff no.	90318080
Packing standard	1
Weight	101700 g

Variants.

Art. no.	Art. no. (ERP)	Description	GTIN
96521076	7794-1/400	Complete calibration system Measuring r.1-400N·m for transducers	4018754214655

96521077	7794-1/1000	Complete calibration system Measuring r.1-1000N·m for transducers	4018754214662
96521078	7794-2/400	Complete calibration system Measuring r.1-400N·m for transducers	4018754214679
96521079	7794-2/1000	Calibration system, complete Measuring r.1-1000N·m for transducers	4018754214686

GTIN-Code.



Images.

STÄHLWILLE

Komplette perfectControl Kalibrieranlagen
mit aufeinander abgestimmten
Komponenten

+
 →
 →

perfectControl

perfectControl	perfectControl	perfectControl	perfectControl
0100	0200	0300	0400
0500	0600	0700	0800
0900	1000	1100	1200
1300	1400	1500	1600
1700	1800	1900	2000
2100	2200	2300	2400
2500	2600	2700	2800
2900	3000	3100	3200
3300	3400	3500	3600
3700	3800	3900	4000
4100	4200	4300	4400
4500	4600	4700	4800
4900	5000	5100	5200
5300	5400	5500	5600
5700	5800	5900	6000
6100	6200	6300	6400
6500	6600	6700	6800
6900	7000	7100	7200
7300	7400	7500	7600
7700	7800	7900	8000
8100	8200	8300	8400
8500	8600	8700	8800
8900	9000	9100	9200
9300	9400	9500	9600
9700	9800	9900	10000

STAHLWILLE Eduard Wille GmbH & Co. KG

Lindenallee 27 · 42349 Wuppertal · Germany · Phone: +49 202 4791-0 · Fax: +49 202 4791-200

info@stahlwille.de · www.stahlwille.com · Copyright by STAHLWILLE Eduard Wille GmbH & Co. KG, Wuppertal

Copyright by STAHLWILLE Eduard Wille GmbH & Co. KG, Wuppertal