



Tool trolley 95 PRO

95/8 PRO

Art.No. 81200166
GTIN 4018754334698
Model 95/8 A PRO

Label. Tool trolley 95/8 PRO 8 Drawers 496 x 827 x 1020 mm Anthracite, RAL 7016

Features.

- **three-stage safety concept:**
 1. central locking with a lateral cylinder lock and hinged key
 2. individual locks prevent inadvertent opening while in transit
 3. topple proof – it is not possible to pull out several drawers at the same time.
- stainless steel handle with reinforced frame connection
- all-round frame protection with shock absorption
- tightly welded, resilient work surface, storage area, and end panel made of stainless steel
- oil and acid-resistant ball-bearing smooth-running wheels (125 mm diameter) with thread guards to protect the bearings from dirt and threads, with two locking brakes
- paper roller and spray can holder included
- 8 easy-to-remove drawers (black RAL 9005) with full-extension runners and bearing cage guide
- hole pattern on both sides for hooks No. 8031-8041, e.g., for larger tools
- can be fitted with STAHLWILLE standard and TCS inserts

Advantages.

Three-stage safety concept: 1. Central locking by side cylinder lock with folding key 2. Individual locks prevent inadvertent opening while in transit 3. Tilt protection – it is not possible to pull out several drawers at the same time.



Product highlights.



Resistant.

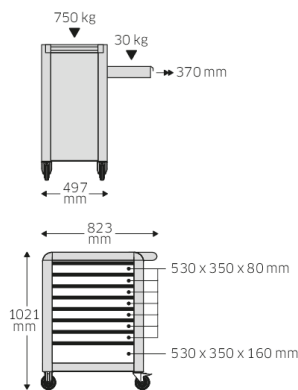
Oil and acid resistant smooth-running wheels (Ø 125 mm) with carpet protection to protect the bearings from dirt and fibres; with two locking brakes.



Convenient.

All drawers can be extended up to 100%. Combining the use of STAHLWILLE standard and TCS inserts, or the variable drawer dividers, ensures a clear overview and convenient access to tools.

Technical Drawing.



Technical Attributes.

| | |
|-------------------------------|---|
| Number of drawers | 8 |
| Width mm (b) | 827 mm |
| Colour | Anthracite, RAL 7016 |
| Colour abbreviation | RAL 7016; RAL 9005 |
| Height mm (h) | 1020 mm |
| Length mm (L) | 496 mm |
| No. | 95/8 A PRO |
| Internal drawer dimensions mm | 346 x 528 x 75 mm (7x) 346 x 528 x 134 mm (1x) |
| Drawer load capacity | 30 kg 45 kg |
| Load capacity | 750 kg |

Logistics data.

| | |
|-----------------------------------|---------------------------|
| Depth mm (IFS) | 720 |
| Width mm (IFS) | 496 |
| Height mm (IFS) | 863 |
| Length (packed, mm) | 836 |
| Width (packed, mm) | 587 |
| Height (packed, mm) | 940 |
| Volume (packed, dm ³) | 461.28808 dm ³ |
| Art. no. | 81200166 |
| Weight (gross, kg) | 79,000 |
| Weight PAP (kg) | 7,500 |
| Weight PVC (kg) | 0,000 |
| GTIN | 4018754334698 |
| Country of origin | CHINA |
| Region of origin | Ausländischer Ursprung |

| | |
|--------------------|---------------------|
| WEEE/ElektroG | nicht ear-pflichtig |
| Customs tariff no. | 94032080 |
| Packing standard | 1 |
| Weight | 71500 g |

Variants.

| Art. no. | Art. no. (ERP) | Description | GTIN |
|----------|----------------|--|---------------|
| 81200166 | 95/8 A PRO | Tool trolley 95/8 PRO 8 Drawers 496 x 827 x 1020 mm Anthracite, RAL 7016 | 4018754334698 |
| 81200167 | 95/8 B PRO | Tool trolley 95/8 PRO 8 Drawers 496 x 827 x 1020 mm Blue, RAL 270 30 35 | 4018754334704 |
| 81200168 | 95/8 R PRO | Tool trolley 95/8 PRO 8 Drawers 496 x 827 x 1020 mm Red, RAL 3020 | 4018754334711 |

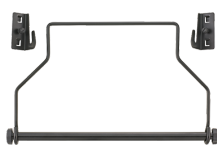
GTIN-Code.



Accessories.



90432727
Spray can holder



81483004
Paper roll holder



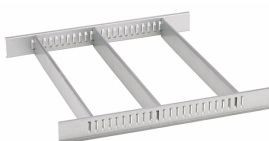
89010040
Cable holder



83812070
Empty tray for small components



81484001
Drawer separator



81484002
Drawer dividers



89010003
Non-slip mat GRIPMAT

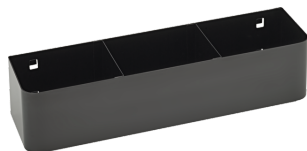


89011053
Waste bin



89010042
Laptop holder adaptor

Spare parts/spare part for.



90432719
Spray can holder



81490001
Set of wheels

Images.





STAHLWILLE Eduard Wille GmbH & Co. KG

Lindenallee 27 · 42349 Wuppertal · Germany · Phone: +49 202 4791-0 · Fax: +49 202 4791-200
info@stahlwille.de · www.stahlwille.com · Copyright by STAHLWILLE Eduard Wille GmbH & Co. KG, Wuppertal
Copyright by STAHLWILLE Eduard Wille GmbH & Co. KG, Wuppertal