

Line maintenance set 163-piece

13214a WW

Art.No. 97830802
GTIN 4018754196388
Model 13214A WW



Label.

Line maintenance set 13214a WW 163 pcs.

Features.

- for maintenance on aircraft and helicopters
- 4x3/3 inserts for 4 drawers (no. TTS 98 PRO for 2 drawers)
- fits workbenches no. WB621, WB625; workshop trolleys no. TTS 93, TTS 95 PRO, TTS 98 PRO

163-piece contents:

96830885, TCS 13A/23 3/16-1 1/8

23 combination spanners **No. 13a**: 3/16; 13/64; 7/32; 15/64; 1/4; 9/32; 5/16; 11/32; 3/8; 7/16; 1/2; 9/16; 19/32; 5/8; 11/16; 3/4; 25/32; 13/16; 7/8; 15/16; 1; 1 1/16; 1 1/8"

1 adjustable combination spanner **No. 4025**: max. 24 mm

96830886, TCS 1/4+3/8+25AN

10 sockets 1/4" **No. 40aD**: 3/16; 7/32; 1/4; 9/32; 5/16; 11/32; 3/8; 7/16; 1/2; 9/16"

10 sockets 1/4", long : **3/16; 7/32; 1/4; 9/32; 5/16; 11/32; 3/8; 7/16; 1/2; 9/16"**

5 articulated sockets 1/4" **No. 402a**: 1/4; 5/16; 3/8; 7/16; 1/2"

1 QuickRelease universal joint 1/4" **No. 407QR**: L.38 mm

2 QuickRelease extensions 1/4" **No. 408QR**: L.55 150 mm

1 Enlargement piece **No. 409M**: 3/8" external square 1/4" internal square

1 Plug-in handle 1/4" **No. 400**: L.150 mm

1 QuickRelease fine-tooth ratchet **No. 415QR N**: L.117 mm

1 Bit fine-tooth ratchet **No. 415SGB N**: L.117 mm

1 Bit holder 1/4" **No. 412**: L.25 mm

8 Sockets 3/8" **No. 45a**: 1/2; 9/16; 19/32; 5/8; 11/16; 3/4; 15/16; 1"

4 Sockets 3/8", long **No. 46a**: 5/8; 11/16; 3/4; 7/8"

2 QuickRelease extensions 3/8" **No. 426QR**: L.75 ; 240 mm

1 QuickRelease universal joint 3/8" **No. 428QR**: L.46 mm

1 Reducer **No. 431**: 1/4" external square 3/8" internal square

1 Enlargement piece **No. 432M**: 1/2" external square 3/8" internal square

1 QuickRelease crank 3/8" **No. 453QR**: L.408 mm

1 QuickRelease fine-tooth ratchet 3/8" **No. 435QR N**: L.193 mm

1 Bit holder 3/8" **No. 443**: L.32 mm

1 bit ratchet **No. 4008-1**

6 ratchet ring open-end spanners angled **No. 17a**: 1/4; 5/16; 3/8; 7/16; 1/2; 9/16"

1 bit set **No. 1208**: 1 quick-change holder 1/4" | L.25mm: SL4,5;6,5;8mm | PH1;2;3 (2x) | T6;15;20 | T-SET 4;6;8;10 (2x) | INHEX 5/64;9/64;1/8;3/16;5/32;7/64;3/32;7/32" | Adaptor 1/4" 4KT/6KT | 30-piece

96830887, TCS LM WW ZANG/SCHDR

2 slotted screwdrivers **No. 4622**: 1.0 x 5.5 x 100;1.2 x 8.0 x 150 mm
3 PHILLIPS® screwdrivers **No. 4632**: PH1; PH2; PH3
1 Combination pliers **No. 6700**: L.160 mm
1 Telephone pliers **No. 6731**: L.200 mm
1 Grip pliers **No. 6564**: L.175 mm
1 Water pump pliers **No. 6572**: L.240 mm
1 Wire twist pliers **No. 6575**: L.230 mm
1 Electronic side cutter **No. 6707**: L. 115 mm
1 Hook tool **No. 13001**: 45° angled L.155 mm
1 Spline puller **No. 13009**
1 LED torch **No. 13128**: 320 lumen
1 Round awl **No. 10758-2K**: L.175 mm
1 Offset screwdriver set **No. 10767a/13**: 0.050; 1/16; 5/64; 3/32; 7/64; 1/8; 9/64; 5/32; 3/16; 7/32; 1/4; 5/16; 3/8"

96830888, TCS LM WW DIVERSES

4 pin punch **No. 109**: 1.4; 2.8; 3.4; 3.9 mm
1 locksmith's hammer **No. 10961**: 500 g
1 Soft-face hammer **No. 10959**: D.35 mm
1 Precision feeler gauge **No. 11095/20**: 0.05-1 mm
1 Plastic scraper medium blade **No.10678**
1 Plastic scraper narrow blade **No. 10679**
1 Plastic scraper angled blade **No. 10680**
1 Plastic scraper pointed blade **No. 10681**
1 Cable knife **No. 12320**: blade length 90 mm
1 Roller tape measure **No. 12935/3**: L.3 m
1 Scriber **No. 12321**
1 Brass mandrel **No. 12495**
1 Magnetic lifter **No. 12601**: 500 g
1 Caliper **No. 12900**: 150 mm/6"
1 Tyre tread gauge **No. 12900/3**
1 Telescopic mirror **No. 12921M**: D.57 mm
1 claw gripper **No. 12922**: D.6 mm
1 steel ruler **No. 13110**: 300 mm

Advantages.

for maintenance on aircraft and helicopters

Technologies and features.



QuickRelease

The QuickRelease technology ensures tools cannot be inadvertently lost – while enabling rapid, safe tool changes.



Tool Control System

Safety-conscious inlays - designed to fit our Tool Trolleys and Tool Boxes. With yellow signal cut-outs to show whether all the tools are in their places.

Technical Attributes.

Number of tools	163 pcs.
Width mm (b)	355 mm
Height mm (h)	177 mm
Length mm (L)	540 mm

Logistics data.

Depth mm (IFS)	540
Width mm (IFS)	355
Height mm (IFS)	177
Length (packed, mm)	550
Width (packed, mm)	365
Height (packed, mm)	180
Volume (packed, dm ³)	36.135 dm ³
Art. no.	97830802
Weight (gross, kg)	18,500
Weight PAP (kg)	0,000
Weight PVC (kg)	0,000
GTIN	4018754196388
Country of origin	GERMANY
Region of origin	Nordrhein-Westfalen
WEEE/ElektroG	Kleingeräte B2C
Customs tariff no.	82060000
Packing standard	1
Weight	18500 g

Parts list.



67313200
Telephone pliers



67003160
Combination pliers



46323303
Cross-head
screwdriver DRALL+



46323301
Cross-head
screwdriver DRALL+



46223555
Screwdriver for slotted
screws DRALL+



96080030
Bit box Air



72060204
Plastic scraper



72060203
Plastic scraper



72060202
Plastic scraper



72060201
Plastic scraper



12011510
QR Socket extension



12011503
QR Socket extension



11011506
QR Socket spanner
extension



11011502
QR Socket spanner
extension



96435700
Ball ended hexagon key
wrench



67076000
Electronic side cutter



41473434
OPEN RATCH
Combination ratchet
wrench



41473232
OPEN RATCH
Combination ratchet
wrench



41472828
OPEN RATCH
Combination ratchet
wrench



41472424
OPEN RATCH
Combination ratchet
wrench



41472020
OPEN RATCH
Combination ratchet
wrench



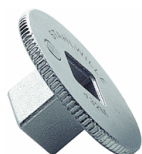
41471616
OPEN RATCH
Combination ratchet
wrench



77130000
Brass punch



12180030
Bit holder



12030010
Adapter



12030001
Adapter



11180010
Bit holder



11030010
Adapter



77592001
Round awl



74240002
Precision feeler gauges



12021000
QuickRelease universal
joint



11021000
QuickRelease universal
joint



65642175
Self grip wrench



77020000
Electricians cable knife



77100000
Scribing iron



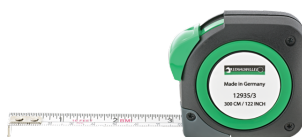
77401057
Telescopic stainless
steel mirror



77371004
Tyre-tread Vernier
gauge



77460001
Steel rule



77040010
Tape measure



77371001
Vernier calliper



01530012
Sockets



01530014
Sockets



01530016
Sockets



01530018
Sockets



01530020
Sockets



01530022
Sockets



01530024
Sockets



01530028
Sockets



01530032
Sockets



01530034
Sockets



70090007
Pin punch



70090006
Pin punch



70090005
Pin punch



70090002
Pin punch



77101010
Splint pin hook



77101001
Hook



77401103
Claw lifter



70191035
Plastic hammer



70110011
Engineers hammers



65726240
Waterpump plier
FastGRIP



65751220
Wire twisting plier



46323002
Cross-head
screwdriver DRALL+



46223080
Screwdriver for slotted
screws DRALL+



11132020
Bit ratchet fine tooth



18120001
Bit ratchet screwdriver



12111020
QR fine-tooth ratchet



11111020
QR fine-tooth ratchet



11050011
Drive handle



1210005
QuickRelease speeder
brace



02420044
Socket



02420040
Socket



02420038
Socket



02420036
Socket



02410048
Socket



02410046
Socket



02410040
Socket



02410038
Socket



02410036
Socket



02410035
Socket



02410034
Socket



02410032
Socket



01540032
UNIFLEX sockets



01540028
UNIFLEX sockets



01540024
UNIFLEX sockets



01540020
UNIFLEX sockets



01540016
UNIFLEX sockets



01640034
Socket



01640032
Socket



01640028
Socket



01640024
Socket



01640022
Socket



01640020
Socket



01640018
Socket



01640016
Socket



01640014
Socket



01640012
Socket



40485252
Combination spanner
OPEN BOX



40485050
Combination spanner
OPEN BOX



40484848
Combination spanner
OPEN BOX



40484646
Combination spanner
OPEN BOX



40484444
Combination spanner
OPEN BOX



40484242
Combination spanner
OPEN BOX



40484141
Combination spanner
OPEN BOX



40484040
Combination spanner
OPEN BOX



40483838
Combination spanner
OPEN BOX



40483636
Combination spanner
OPEN BOX



40483535
Combination spanner
OPEN BOX



40483434
Combination spanner
OPEN BOX



40483232
Combination spanner
OPEN BOX



40482828
Combination spanner
OPEN BOX



40482424
Combination spanner
OPEN BOX



40482222
Combination spanner
OPEN BOX



40482020
Combination spanner
OPEN BOX



40481818
Combination spanner
OPEN BOX



40481616
Combination spanner
OPEN BOX



40481515
Combination spanner
OPEN BOX



40481414
Combination spanner
OPEN BOX



40481313
Combination spanner
OPEN BOX



40481212
Combination spanner
OPEN BOX



40250106
Adjustable spanner



77490006
LED torch



77260026
Pen magnet lifter

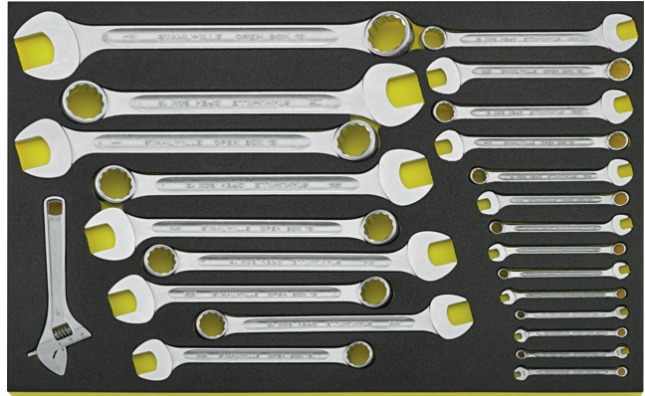
Variants.

Art. no.	Art. no. (ERP)	Description	GTIN
97830802	13214A WW	Line maintenance set 13214a WW 163 pcs.	4018754196388

GTIN-Code.



Images.



STAHLWILLE Eduard Wille GmbH & Co. KG

Lindenallee 27 · 42349 Wuppertal · Germany · Phone: +49 202 4791-0 · Fax: +49 202 4791-200
info@stahlwille.de · www.stahlwille.com · Copyright by STAHLWILLE Eduard Wille GmbH & Co. KG, Wuppertal
Copyright by STAHLWILLE Eduard Wille GmbH & Co. KG, Wuppertal