



## Mobile workbench WB 621

### WB 621

Art.No. 85010621  
GTIN 4018754336241  
Model WB 621

#### Label.

Mobile workbench WB 621 7 Drawers Anthracite, RAL 7016 L.500mm x W.1150mm x H.1045mm

#### Features.

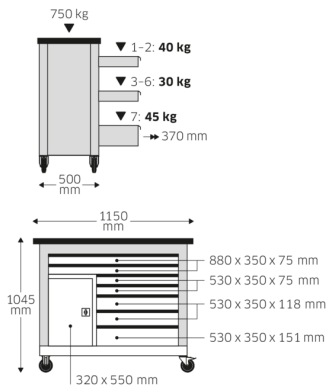
- **three-stage safety concept:**
  1. central locking with a lateral cylinder lock and hinged key
  2. individual locks prevent inadvertent opening while in transit
  3. topple proof – it is not possible to pull out several drawers at the same time
- 7 drawers
- large work surface with birch multiplex worktop, FSC certified, 1150x 500x30 mm
- separate lockable cabinet with magnetic bracket and adjustable shelves (70mm grid)
- drawers and cabinet section close at the same time
- stainless steel trim
- cabling is possible through two rubberised feed throughs and a removable cable channel on the back
- oil- and acid-resistant wheels (125 mm diameter) with thread guards to protect the bearings from dirt and threads, with two locking brakes
- frame RAL 7016, drawers and cabinet RAL 9005, in durable industrial powder coating
- paper roll holder
- hole pattern on the side for hooks No. 8031-8041, e.g., for larger tools
- can be fitted with STAHLWILLE standard and TCS inserts, drawer 1+2; 1 x 3/3 + 1 x 2/3 drawer 3-7; 1 x 3/3
- optionally available e-kit consisting of a magnetic multi-plug with two USB ports, a magnetic holder (for variable attachment to any part of the workbench), and a cable holder

#### Advantages.

Three-stage safety concept: 1. Central locking by side cylinder lock with folding key 2. Individual locks prevent inadvertent opening while in transit 3. Tilt protection – it is not possible to pull out several drawers at the same time



## Technical Drawing.



## Technical Attributes.

<b>Number of drawers</b>	7
<b>Width mm (b)</b>	1150 mm
<b>Colour</b>	Anthracite, RAL 7016
<b>Height mm (h)</b>	1045 mm
<b>Length mm (L)</b>	500 mm
<b>Internal drawer dimensions mm</b>	880 x 350 x 75 (2x) 530 x 350 x 75 (2x) 530 x 350 x 118 (2x) 530 x 350 x 151 (1x)
<b>Drawer load capacity</b>	40 kg 30 kg 30 kg 45 kg
<b>Load capacity</b>	750 kg

## Logistics data.

<b>Depth mm (IFS)</b>	1150
<b>Width mm (IFS)</b>	500
<b>Height mm (IFS)</b>	890
<b>Length (packed, mm)</b>	1160
<b>Width (packed, mm)</b>	550
<b>Height (packed, mm)</b>	930
<b>Volume (packed, dm<sup>3</sup>)</b>	593.34 dm <sup>3</sup>
<b>Art. no.</b>	85010621
<b>Weight (gross, kg)</b>	115,000
<b>Weight PAP (kg)</b>	7,500
<b>Weight PVC (kg)</b>	0,000
<b>GTIN</b>	4018754336241
<b>Country of origin</b>	CHINA
<b>Region of origin</b>	Ausländischer Ursprung
<b>WEEE/ElektroG</b>	nicht ear-pflichtig
<b>Customs tariff no.</b>	94032080
<b>Packing standard</b>	1
<b>Weight</b>	97500 g

## Variants.

Art. no.	Art. no. (ERP)	Description	GTIN
85010621	WB 621	Mobile workbench WB 621 7 Drawers Anthracite, RAL 7016 L.500mm x W.1150mm x H.1045mm	4018754336241

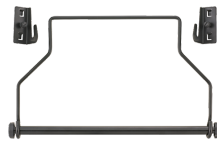
## GTIN-Code.



## Accessories.



90432727  
Spray can holder



81483004  
Paper roll holder



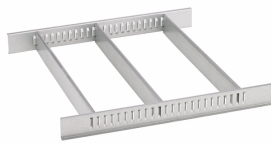
89010040  
Cable holder



83812070  
Empty tray for small components



81484001  
Drawer separator



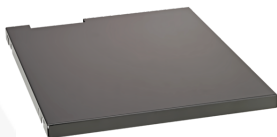
81484002  
Drawer dividers



89010003  
Non-slip mat GRIPMAT



90432728  
Electronic kit



90432736  
Shelf



89010041  
Laptop holder

## Spare parts/spare part for.



90432731  
Multiplex beech wood  
top



81490001  
Set of wheels

## Images.





**STAHLWILLE Eduard Wille GmbH & Co. KG**

Lindenallee 27 · 42349 Wuppertal · Germany · Phone: +49 202 4791-0 · Fax: +49 202 4791-200  
info@stahlwille.de · www.stahlwille.com · Copyright by STAHLWILLE Eduard Wille GmbH & Co. KG, Wuppertal  
Copyright by STAHLWILLE Eduard Wille GmbH & Co. KG, Wuppertal