



**Line maintenance set in tool trolley
no. 13217 163 pieces**

13214/1 WT/LR

Art.No. **98814930**
GTIN **4018754347186**
Model **13214/1 WT/LR**

Label.

Line maintenance set in tool trolley no. 13217 13214/1 WT/LR L.381mm W.581mm H.455mm 163 pcs.

Features.

Top Features Tool Trolley:

- for maintenance on aircraft and helicopters
- extremely robust and resilient tool trolley made of polypropylene for professional use
- 5 easily removable drawers with pull-out stop in 2 different heights, closable with transparent lid
- with one top and one front, removable lid
- 1 removable tray with 2 handles and 2 transparent drawer lids under the top lid
- drawers can be used as a separate tool box due to transparent lid
- 2 easy-running double wheels on the telescopic handle
- extendable telescopic handle and 2 side carrying handles
- resistant to Skydrol, acetone, petrol and hydraulic oils
- lockable by padlock in 3 positions

163-piece contents in TCS inserts:

96831100, TCS 13214/1 WT/LM 1

2 sockets with hex 1/4" **No. 40:** 4; 4.5 mm

11 sockets with double hex 1/4" **No. 40D:** 5; 5.5; 6; 7; 8; 9; 10; 11; 12; 13; 14 mm

6 sockets 3/8" **No. 45:** 15; 17; 19; 21; 22; 24 mm

4 sockets 3/8" **No. 46:** 15; 17; 19; 21 mm

2 QuickRelease extensions 1/4" **No. 408QR:** L.55 150 mm

1 QuickRelease universal joint 1/4" **No. 407/1QR:** L.45 mm

1 transition piece 1/4" to 3/8" **No. 409M:** L.13 mm

1 QuickRelease fine-tooth ratchet 1/4" **No. 415QR N:** L.117 mm

1 Bit fine-tooth ratchet 1/4" **No. 415SGB N:** L.117 mm

1 Bit holder 1/4" **No. 412:** L.25 mm

2 QuickRelease extensions 3/8" **No. 426QR:** L.75 ; 240 mm

1 QuickRelease universal joint 3/8" **No. 428/1QR:** L.60 mm

1 Reducer 3/8" to 1/4" **No. 431:** L.28 mm

1 Transition piece 3/8" to 1/2" **No. 432M:** L.16 mm

1 QuickRelease fine-tooth ratchet 3/8" **No. 435QR N:** L.193 mm

1 Bit holder 5/16" **No. 443:** L.32 mm

1 Bit ratchet 1/4" **No. 4008-1**

1 Bit set **No. 1208**: 1 Quick-release holder 1/4" | L.25mm: SL4.5;6.5;8mm | PH1;2;3 (2x) | T6;15;20 | T-SET 4;6;8;10 (2x) | INHEX 5/64;9/64;1/8;3/16;5/32;7/64;3/32;7/32" | Adapter 1/4" 4KT/6KT | 30-piece
1 Plug-in handle 1/4" **No. 400**: L.150 mm

96831101, TCS 13214/1 WT/LM 2

1 QuickRelease crank **No. 453QR**: L.408 mm
1 Precision feeler gauge **No. 11095/20**: 0.05; 0.10; 0.15; 0.20; 0.25; 0.30; 0.35; 0.40; 0.45; 0.50; 0.55; 0.60; 0.65; 0.70; 0.75; 0.80; 0.85; 0.90; 0.95; 1.00 mm
1 Cable gauge **No. 12320**: blade length 90 mm
1 claw gripper **No. 12922**: L.540 mm
1 Tyre tread gauge **No. 12900/3**: L.150 mm
1 Combination spanner, adjustable **No. 4025 6**, SW max.24 mm
1 Combination spanner OPEN BOX **No. 13**: 30 mm L.330 mm
1 Socket with hexagon, long **No. 40L**: 4.5 mm
12 Sockets with double hexagon, long 1/4" **No. 40DL**: 4.5; 5; 5.5; 6; 7; 8; 9; 10; 11; 12; 13; 14 mm
5 Articulated sockets with double hex 1/4" **No. 402**: 6; 7; 8; 9; 10 mm

96831102, TCS 13214/1 WT/LM 3

1 Caliper **No. 12900N**: L.150 mm
1 Telescopic mirror **No. 12921M**: L.178-921 mm
1 Water pump pliers FastGRIP **No. 6572**: L.240 mm
1 Wire twist pliers **No. 6575 1**: L.230 mm
1 Grip pliers **No. 6564 2**: L.175 mm
1 Electronic side cutters **No. 6707**: L.115 mm
1 Combination pliers **No. 6700**: L.160 mm
1 Telephone pliers **No. 6731**: L.200 mm

96831103, TCS 13214/1 WT/LM 4

4 Pin punches **No. 109**: 1.4; 2.8; 3.4; 3.9 mm
1 Locksmith's hammer **No. 10961**: 500 g
1 Soft-face hammer **No. 10959**: D.35 mm
1 Steel rule **No. 13110**: L.300 mm
1 Brass mandrel **No. 12495**: L.200 mm
1 Scriber **No. 12321**: L.250 mm
1 Pin magnetic lifter **No. 12601**: L.145 mm mm
1 Roller tape measure **No. 12935/3**: L.3 m
1 LED torch **No. 13128**: L.130 mm

96831104, TCS 13214/1 WT/LM 5

1 Plastic scraper **No. 10681**: L.175 mm
1 plastic scraper **No. 10680**: L.174 mm
1 plastic scraper **No. 10679**: L.170 mm
1 plastic scraper **No. 10678**: L.170 mm
2 DRALL+ flat-blade screwdriver **No. 4622**: 1.0 x 5.5 X 100; 1.2 x 8.0 x 150 mm
3 PHILLIPS® screwdriver **No. 4632**: PH1; PH2; PH3
1 Round awl **No. 10758**: L.280 mm
1 Hook tool **No. 13001**: 45° angled L.155 mm
1 Offset screwdriver set **No. 10767/9**: 1.5; 2; 2.5; 3; 4; 5; 6; 8; 10 mm
1 Split pin puller **No. 13009**: L.265 mm

96831105, TCS 13214/1 WT/LM 6

17 Combination spanners OPEN BOX **no. 13**: 5.5; 6; 7; 8; 9; 10; 12; 13; 14; 15; 17; 19; 20; 21; 22; 24; 27 mm
5 Combination spanners OPEN BOX **no. 16**: 3.2; 3.5; 4; 4.5; 5 mm
7 Ratchet combination spanners **No. 17**: 8; 9; 10; 12; 13; 17; 19 mm

Technical Attributes.

Number of tools	163 pcs.
Width mm (b)	581 mm
Height mm (h)	455 mm
Length mm (L)	381 mm

Logistics data.

Depth mm (IFS)	590
Width mm (IFS)	400
Height mm (IFS)	480
Length (packed, mm)	590
Width (packed, mm)	400
Height (packed, mm)	480
Volume (packed, dm3)	113.28 dm3
Art. no.	98814930
Weight (gross, kg)	29,000
Weight PAP (kg)	1,500
Weight PVC (kg)	0,000
GTIN	4018754347186
Country of origin	GERMANY
Region of origin	Nordrhein-Westfalen
WEEE/ElektroG	nicht ear-pflichtig
Customs tariff no.	82060000
Packing standard	1
Weight	27500 g

Parts list.



61015522
TCS insert



61015521
TCS insert



61015520
TCS insert



61015518
TCS insert



61015517
TCS insert



61015516
TCS insert



12021500
QR Cardan Joint



11021500
QR Cardan Joint



81091311



67313200
Telephone pliers



67003160
Combination pliers



46323303
Cross-head
screwdriver DRALL+



46323301
Cross-head
screwdriver DRALL+



46223555
Screwdriver for slotted
screws DRALL+



96080030
Bit box Air



72060204
Plastic scraper



72060203
Plastic scraper



72060202
Plastic scraper



72060201
Plastic scraper



12011510
QR Socket extension



12011503
QR Socket extension



11011506
QR Socket spanner
extension



11011502
QR Socket spanner
extension



96432600
Set: Ball ended
hexagon key wrench



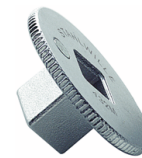
67076000
Electronic side cutter



77130000
Brass punch



12180030
Bit holder



12030010
Adapter



12030001
Adapter



11180010
Bit holder



11030010
Adapter



77592001
Round awl



74240002
Precision feeler gauges



65642175
Self grip wrench



77020000
Electricians cable knife



77100000
Scribing iron



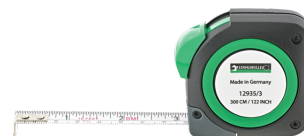
77401057
Telescopic stainless steel mirror



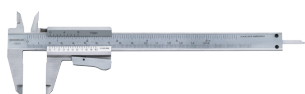
77371004
Tyre-tread Vernier gauge



77460001
Steel rule



77040010
Tape measure



77371001
Vernier calliper



70090007
Pin punch



70090006
Pin punch



70090005
Pin punch



70090002
Pin punch



77101010
Splint pin hook



77101001
Hook



77401103
Claw lifter



70191035
Plastic hammer



70110011
Engineers hammers



65726240
Waterpump plier
FastGRIP



65751220
Wire twisting plier



46323002
Cross-head screwdriver DRALL+



46223080
Screwdriver for slotted screws DRALL+



11132020
Bit ratchet fine tooth



18120001
Bit ratchet screwdriver



12111020
QR fine-tooth ratchet



11111020
QR fine-tooth ratchet



11050011
Drive handle



12100005
QuickRelease speeder
brace



01010045
Sockets



01010004
Sockets



02020021
Socket



02020019
Socket



02020017
Socket



02020015
Socket



02010024
Socket



02010022
Socket



02010021
Socket



02010019
Socket



02010017
Socket



02010015
Socket



01140010
UNIFLEX sockets



01140009
UNIFLEX sockets



01140008
UNIFLEX sockets



01140007
UNIFLEX sockets



01140006
UNIFLEX sockets



01020045
Sockets



01240055
Sockets



01240014
Sockets



01240013
Sockets



01240012
Sockets



01240011
Sockets



01240010
Sockets



01240009
Sockets



01240008
Sockets



01240007
Sockets



01240006
Sockets



01240005
Sockets



01030055
Sockets



01030014
Sockets



01030013
Sockets



01030012
Sockets



01030011
Sockets



01030010
Sockets



01030009
Sockets



01030008
Sockets



01030007
Sockets



01030006
Sockets



01030005
Sockets



40095050
Combination spanner
OPEN BOX



40094545
Combination spanner
OPEN BOX



40094040
Combination spanner
OPEN BOX



40093535
Combination spanner
OPEN BOX



40093232
Combination spanner
OPEN BOX



40085500
Combination spanner
OPEN BOX



40083030
Combination spanner
OPEN BOX



40082727
Combination spanner
OPEN BOX



40082424
Combination spanner
OPEN BOX



40082222
Combination spanner
OPEN BOX



40082121
Combination spanner
OPEN BOX



40082020
Combination spanner
OPEN BOX



40081919
Combination spanner
OPEN BOX



40081717
Combination spanner
OPEN BOX



40081515
Combination spanner
OPEN BOX



40081414
Combination spanner
OPEN BOX



40081313
Combination spanner
OPEN BOX



40081212
Combination spanner
OPEN BOX



40081010
Combination spanner
OPEN BOX



40080909
Combination spanner
OPEN BOX



40080808
Combination spanner
OPEN BOX



40080707
Combination spanner
OPEN BOX



40080606
Combination spanner
OPEN BOX



40250106
Adjustable spanner



41171919
Combination ratcheting
spanner OPEN RATCH



41171717
Combination ratcheting
spanner OPEN RATCH



41171313
Combination ratcheting
spanner OPEN RATCH



41171212
Combination ratcheting
spanner OPEN RATCH



41171010
Combination ratcheting
spanner OPEN RATCH



41170909
Combination ratcheting
spanner OPEN RATCH



41170808
Combination ratcheting
spanner OPEN RATCH



77490006
LED torch



77260026
Pen magnet lifter

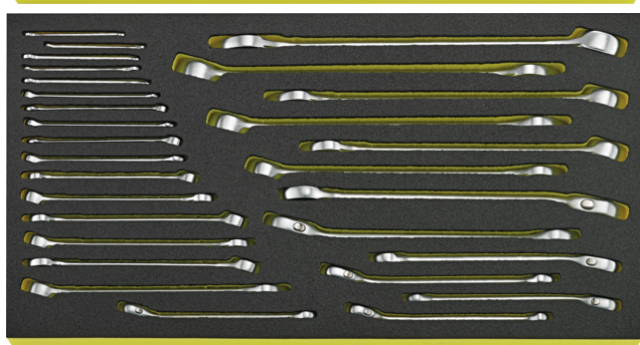
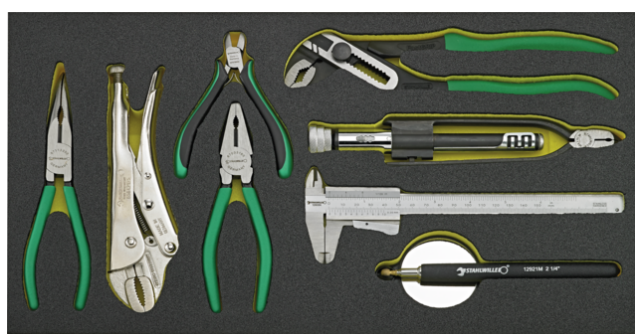
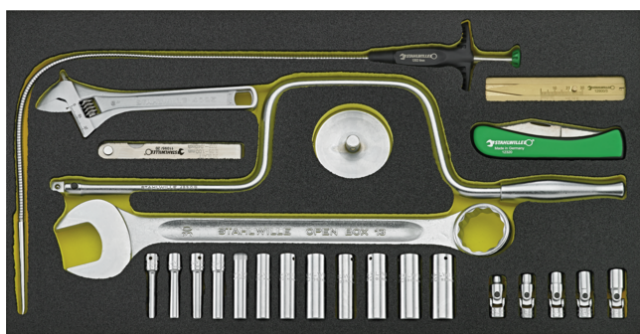
Variants.

Art. no.	Art. no. (ERP)	Description	GTIN
98814930	13214/1 WT/LR	Line maintenance set in tool trolley no. 13217 13214/1 WT/LR L.381mm W.581mm H.455mm 163 pcs.	4018754347186

GTIN-Code.



Images.



STAHLWILLE Eduard Wille GmbH & Co. KG

Lindenallee 27 · 42349 Wuppertal · Germany · Phone: +49 202 4791-0 · Fax: +49 202 4791-200
info@stahlwille.de · www.stahlwille.com · Copyright by STAHLWILLE Eduard Wille GmbH & Co. KG, Wuppertal
Copyright by STAHLWILLE Eduard Wille GmbH & Co. KG, Wuppertal