

Line maintenance set 167-piece

13214 WW



Art.No. **97830803**
GTIN **4018754212606**
Model **13214 WW**



Label.

Line maintenance set 13214 WW 167 pcs.

Features.

- for maintenance on aircraft and helicopters
- 4x3/3 inserts for 4 drawers (no. TTS 98 PRO for 2 drawers)
- suitable for workbenches no. WB621, WB625; workshop trolley no. TTS 93, TTS 95 PRO, TTS 98 PRO

Contents 167-piece:

9683088, TCS LM WW DIVERSES

- 4 pin punch **No. 109**: 1.4; 2.8; 3.4; 3.9 mm
- 1 locksmith's hammer **No. 10961**: 500 g
- 1 soft-face hammer **No. 10959**: Ø 35 mm
- 1 precision feeler gauges **No. 11095/20**: 0,05-1 mm
- 1 plastic scraper medium blade **No.10678**
- 1 plastic scraper narrow blade **No. 10679**
- 1 plastic scraper angled blade **No. 10680**
- 1 plastic scraper pointed blade **No. 10681**
- 1 cable knife **No. 12320**: blade length 90 mm
- 1 roller tape measure **No. 12935/3**: L. 3 m
- 1 scribe **No. 12321**
- 1 brass mandrel **No. 12495**
- 1 magnet lifter **No. 12601**: 500 g
- 1 caliper **No. 12900**: 150 mm/6"
- 1 tyre-tread gauge **No. 12900/3**
- 1 telescopic mirror **No. 12921M**: Ø 57 mm
- 1 claw gripper **No. 12922**: Ø 6 mm
- 1 steel rule **No. 13110**: 300 mm

96832206, TCS SORT.13214 M WW PLIERS

- 2 slotted screwdrivers **No. 4622**: size 1 (1.0 x 5.5 x 100 mm); size 3 (1.2 x 8.0 x 150 mm)
- 3 PHILLIPS® screwdrivers **No. 4632**: PH1; PH2; PH3
- 1 Set ball-end hex key L-wrenches **No. 10767/9**: 1.5; 2; 2.5; 3; 4; 5; 6; 8; 10 mm
- 1 Wire twist pliers **No. 65751220**: L.230 mm
- 1 Grip pliers **No. 6564 2**: L.175 mm
- 1 Combination pliers **No. 6700**: L.160 mm

- 1 Telephone pliers **No. 6731**: L.200 mm
- 1 Water pump pliers FastGRIP **No. 6572**: L.240 mm
- 1 Mini-Electronic side cutters **No. 6708**: L.110 mm
- 1 Hook tool **No. 13001**: 45° angled L.155 mm
- 1 Split pin puller **No. 13009**: L.265 mm
- 1 LED torch **No. 13128**: L.130 mm
- 1 Round awl **No. 10758**: L.280 mm

96832207, TCS SORT.13214 M WW 1/4-3/8

- 2 sockets 1/4" **No. 40**: 4; 4.5 mm
- 11 sockets 1/4" **No. 40D**: 5; 5.5; 6; 7; 8; 9; 10; 11; 12; 13; 14 mm
- 1 socket 1/4", long **No. 40L**: 4.5 mm
- 11 sockets 1/4", long **No. 40DL**: 5; 5.5; 6; 7; 8; 9; 10; 11; 12; 13; 14 mm
- 5 articulated sockets **No. 402**: 1/4" square socket 6; 7; 8; 9; 10 mm
- 2 sockets 1/4" **No. 40**: 4; 4.5 mm
- 11 sockets 1/4" **No. 40D**: 5; 5.5; 6; 7; 8; 9; 10; 11; 12; 13; 14 mm
- 1 socket 1/4", long **No. 40L**: 4.5 mm
- 11 sockets 1/4", long **No. 40DL**: 40DL: 5; 5.5; 6; 7; 8; 9; 10; 11; 12; 13; 14 mm
- 5 Articulated sockets **No. 402**: 1/4" square socket 6; 7; 8; 9; 10 mm
- 2 QuickRelease extensions 1/4" **No. 408QR**: L.55 ; 150 mm
- 1 Cardan joint 1/4" **No. 407**: L.38 mm
- 1 Enlargement piece 3/8" **No. 409**: L.25 mm
- 1 Bit fine-tooth ratchet 1/4" **No. 415SGB N**: L.117 mm
- 1 Fine-tooth ratchet 1/4" **No. 415QR N**: L.117 mm
- 1 Bit holder 1/4" **No. 412**: L.20 mm
- 2 QuickRelease extensions 3/8" **No. 426QR**: L.75; 240 mm
- 1 Cardan joint 3/8" **No. 428**: L.46 mm
- 1 Reducer 3/8" to 1/4" **No. 431**: L.28 mm
- 1 Enlargement piece **No. 432 M**: 3/8 to 1/2"
- 1 QuickRelease crank 3/8" **No. 453QR**: L.408 mm
- 1 QuickRelease fine-tooth ratchet 3/8" **No. 435QR N**: L.193 mm
- 1 Bit holder 5/16" **No. 443**: L.32 mm
- 1 Plug-in handle **No. 400**: 1/4"
- 7 Ratchet combination spanners OPEN RATCH **No. 17**: 8; 9; 10; 12; 13; 17; 19 mm
- 1 Bit set **No. 1208**: 1 Quick-change holder 1/4" | L.25mm: SL4.5;6.5;8mm | PH1;2;3 (2x) | T6;15;20 | T-SET 4;6;8;10 (2x) | INHEX 5/64;9/64;1/8;3/16;5/32;7/64;3/32;7/32" | Adapter 1/4" 4KT/6KT | 30-piece
- 1 Bit ratchet 1/4" **No. 4008-1**: L.250 mm

96832208, TCS SORT.13214 M WW 13ER

- 18 combination spanners **No. 13**: 5.5; 6; 7; 8; 9; 10; 12; 13; 14; 15; 17; 19; 20; 21; 22; 24; 27; 30 mm
- 5 combination spanners **No. 16**: 3.2; 3.5; 4; 4.5; 5 mm

Technologies and features.



QuickRelease

The QuickRelease technology ensures tools cannot be inadvertently lost – while enabling rapid, safe tool changes.



Tool Control System

Safety-conscious inlays - designed to fit our Tool Trolleys and Tool Boxes. With yellow signal cut-outs to show whether all the tools are in their places.

Technical Attributes.

Number of tools	167 pcs.
Width mm (b)	430 mm
Height mm (h)	210 mm
Length mm (L)	620 mm

Logistics data.

Depth mm (IFS)	620
Width mm (IFS)	430
Height mm (IFS)	200
Length (packed, mm)	760
Width (packed, mm)	567
Height (packed, mm)	210
Volume (packed, dm3)	90.4932 dm3
Art. no.	97830803
Weight (gross, kg)	15,500
Weight PAP (kg)	2,500
Weight PVC (kg)	0,000
GTIN	4018754212606
Country of origin	GERMANY
Region of origin	Nordrhein-Westfalen
WEEE/ElektroG	Kleingeräte B2C
Customs tariff no.	82060000
Packing standard	1
Weight	15500 g

Parts list.



12021500
QR Cardan Joint



11021500
QR Cardan Joint



67313200
Telephone pliers



67003160
Combination pliers



46323303
Cross-head
screwdriver DRALL+



46323301
Cross-head
screwdriver DRALL+



46223555
Screwdriver for slotted
screws DRALL+



96080030
Bit box Air



72060204
Plastic scraper



72060203
Plastic scraper



72060202
Plastic scraper



72060201
Plastic scraper



12011510
QR Socket extension



12011503
QR Socket extension



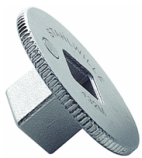
11011506
QR Socket spanner
extension



11011502
QR Socket spanner
extension



96432600
Set: Ball ended
hexagon key wrench



67086000
Mini electronic side
cutter



77130000
Brass punch



12180030
Bit holder



12030010
Adapter



12030001
Adapter



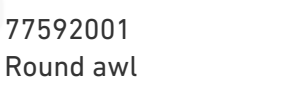
11180010
Bit holder



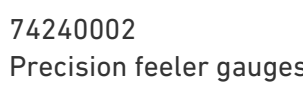
11030010
Adapter



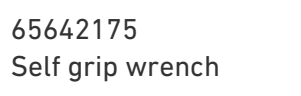
77592001
Round awl



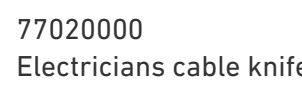
74240002
Precision feeler gauges



65642175
Self grip wrench



77020000
Electricians cable knife





77100000
Scribing iron



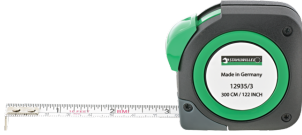
77401057
Telescopic stainless steel mirror



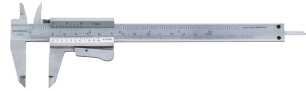
77371004
Tyre-tread Vernier gauge



77460001
Steel rule



77040010
Tape measure



77371001
Vernier calliper



70090007
Pin punch



70090006
Pin punch



70090005
Pin punch



70090002
Pin punch



77101010
Splint pin hook



77101001
Hook



77401103
Claw lifter



70191035
Plastic hammer



70110011
Engineers hammers



65726240
Waterpump plier
FastGRIP



65751220
Wire twisting plier



46323002
Cross-head screwdriver DRALL+



46223080
Screwdriver for slotted screws DRALL+



11132020
Bit ratchet fine tooth



18120001
Bit ratchet screwdriver



12111020
QR fine-tooth ratchet



11111020
QR fine-tooth ratchet



11050011
Drive handle



12100005
QuickRelease speeder
brace



01010045
Sockets



01010004
Sockets



02020021
Socket



02020019
Socket



02020017
Socket



02020015
Socket



02010024
Socket



02010022
Socket



02010021
Socket



02010019
Socket



02010017
Socket



02010015
Socket



01140010
UNIFLEX sockets



01140009
UNIFLEX sockets



01140008
UNIFLEX sockets



01140007
UNIFLEX sockets



01140006
UNIFLEX sockets



01020045
Sockets



01240055
Sockets



01240014
Sockets



01240013
Sockets



01240012
Sockets



01240011
Sockets



01240010
Sockets



01240009
Sockets



01240008
Sockets



01240007
Sockets



01240006
Sockets



01240005
Sockets



01030055
Sockets



01030014
Sockets



01030013
Sockets



01030012
Sockets



01030011
Sockets



01030010
Sockets



01030009
Sockets



01030008
Sockets



01030007
Sockets



01030006
Sockets



01030005
Sockets



40095050
Combination spanner
OPEN BOX



40094545
Combination spanner
OPEN BOX



40094040
Combination spanner
OPEN BOX



40093535
Combination spanner
OPEN BOX



40093232
Combination spanner
OPEN BOX



40085500
Combination spanner
OPEN BOX



40083030
Combination spanner
OPEN BOX



40082727
Combination spanner
OPEN BOX



40082424
Combination spanner
OPEN BOX



40082222
Combination spanner
OPEN BOX



40082121
Combination spanner
OPEN BOX



40082020
Combination spanner
OPEN BOX



40081919
Combination spanner
OPEN BOX



40081717
Combination spanner
OPEN BOX



40081515
Combination spanner
OPEN BOX



40081414
Combination spanner
OPEN BOX



40081313
Combination spanner
OPEN BOX



40081212
Combination spanner
OPEN BOX



40081010
Combination spanner
OPEN BOX



40080909
Combination spanner
OPEN BOX



40080808
Combination spanner
OPEN BOX



40080707
Combination spanner
OPEN BOX



40080606
Combination spanner
OPEN BOX



40250106
Adjustable spanner



41171919
Combination ratcheting
spanner OPEN RATCH



41171717
Combination ratcheting
spanner OPEN RATCH



41171313
Combination ratcheting
spanner OPEN RATCH



41171212
Combination ratcheting
spanner OPEN RATCH



41171010
Combination ratcheting
spanner OPEN RATCH



41170909
Combination ratcheting
spanner OPEN RATCH



41170808
Combination ratcheting
spanner OPEN RATCH



77490006
LED torch



77260026
Pen magnet lifter

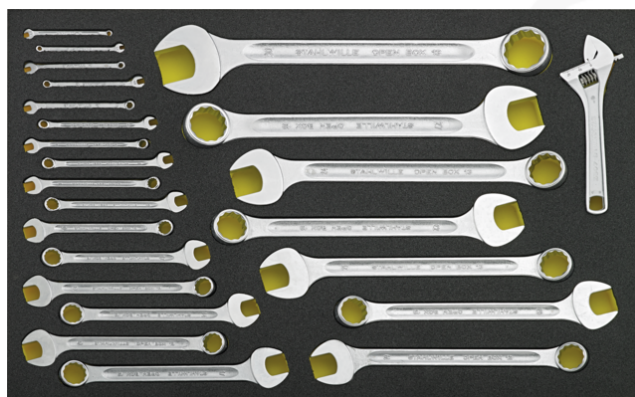
Variants.

Art. no.	Art. no. (ERP)	Description	GTIN
97830803	13214 WW	Line maintenance set 13214 WW 167 pcs.	4018754212606

GTIN-Code.



Images.





STAHLWILLE Eduard Wille GmbH & Co. KG

Lindenallee 27 · 42349 Wuppertal · Germany · Phone: +49 202 4791-0 · Fax: +49 202 4791-200
info@stahlwille.de · www.stahlwille.com · Copyright by STAHLWILLE Eduard Wille GmbH & Co. KG, Wuppertal
Copyright by STAHLWILLE Eduard Wille GmbH & Co. KG, Wuppertal