

Line maintenance set (inch) in tool trolley no. 13217 163 pieces

13214A/1 WT/LR

Art.No. 98814935

GTIN 4018754348381

Model 13214A/1 WT/LR

Label.

Line Maintenance Set (inch) in tool trolley no. 13217 13214A/1 WT/LR L.381mm W.581mm H.455mm 163 pcs.

Features.

Top features tool trolley:

- for maintenance on aircraft and helicopters
- in an extremely robust and resilient tool trolley made of polypropylene
- for professional use
- 5 easily removable drawers that can be closed with a transparent lid:
 - 1 removable tray with 2 handles
 - 2 transparent drawer lids under the top lid
 - 2 easy-running double castors on the telescopic handle side
- Drawers can be used as a separate tool box due to transparent lid
- with pull-out stop in 2 different heights
- with one top and one front, removable lid
- extendable telescopic handle and 2 side carrying handles
- resistant to Skydrol, acetone, petrol and hydraulic oils
- lockable by padlock in 3 positions
- with Tool Control System (TCS)

163-piece contents in TCS inserts:

96831106, TCS 13214A/1 WT/LM 1

10 sockets with double hex 1/4" No. 40aD: 3/16; 7/32; 1/4; 9/32; 5/16; 11/32; 3/8; 7/16; 1/2; 9/16"

8 sockets with double hex 3/8" No. 45a: 1/2; 9/16; 19/32; 5/8; 11/16; 3/4; 15/16; 1

4 sockets with double hex 3/8" No. 46a: 5/8; 11/16; 3/4; 7/8

2 QuickRelease extensions 1/4" No. 408QR: L.55 150 mm

1 QuickRelease universal joint 1/4" No. 407/1QR: L.45 mm

1 transition piece 1/4" to 3/8" No. 409M: L.13 mm

1 QuickRelease fine-tooth ratchet 1/4" No. 415QR N: L.117 mm

1 Bit fine-tooth ratchet 1/4" No. 415SGB N: L.117 mm

1 Bit holder 1/4" No. 412: L.25 mm

2 QuickRelease extensions 3/8" No. 426QR: L.75 ; 240 mm

1 QuickRelease universal joint 3/8" No. 428/1QR: L.60 mm

1 Reducer 3/8" to 1/4" No. 431: L.28 mm

1 Transition piece 3/8" to 1/2" No. 432M: L.16 mm

1 QuickRelease fine-tooth ratchet 3/8" No. 435QR N: L.193 mm

1 Bit holder 5/16" No. 443: L.32 mm

1 Bit ratchet 1/4" No. 4008-1

1 Bit set **No. 1208**: 1 Quick-release holder 1/4" | L.25mm: SL4.5;6.5;8mm | PH1;2;3 (2x) | T6;15;20 | T-SET 4;6;8;10 (2x) | INHEX 5/64;9/64;1/8;3/16;5/32;7/64;3/32;7/32" | Adapter 1/4" 4KT/6KT | 30-piece
1 Plug-in handle 1/4" **No. 400**: L.150 mm

96831107, TCS 13214A/1 WT/LM 2

1 QuickRelease crank 3/8" **No. 453QR**: L.408 mm
1 Precision feeler gauge **No. 11095/20**: 0.05; 0.10; 0.15; 0.20; 0.25; 0.30; 0.35; 0.40; 0.45; 0.50; 0.55; 0.60; 0.65; 0.70; 0.75; 0.80; 0.85; 0.90; 0.95; 1.00 mm
1 Cable gauge **No. 12320**: blade length 90 mm
1 claw gripper **No. 12922**: L.540 mm
1 Tyre tread gauge **No. 12900/3**: L.150 mm
1 Combination spanner, adjustable **No. 4025 6**, SW max.24 mm
1 Combination spanner OPEN BOX **No. 13a**: 1.1/8" L.330 mm
10 Sockets with double hex, long 1/4" **No. 40aDL**: 3/16; 7/32; 1/4; 9/32; 5/16; 11/32; 3/8; 7/16; 1/2; 9/16"
5 Articulated sockets with double hex 1/4" **No. 402a**: 1/4; 5/16; 3/8; 7/16; 1/2"

96831108, TCS 13214A/1 WT/LM 5

1 plastic scraper **No. 10681**: L.175 mm
1 Plastic scraper **No. 10680**: L.174 mm
1 Plastic scraper **No. 10679**: L.170 mm
1 Plastic scraper **No. 10678**: L.170 mm
2 DRALL+ flat-blade screwdriver **No. 4622**: 1.0 x 5.5 X 100; 1.2 x 8.0 x 150 mm
3 PHILLIPS® screwdriver **No. 4632**: PH1; PH2; PH3
1 Round awl **No. 10758**: L.280 mm
1 Hook tool **No. 13001**: 45° angled L.155 mm
1 Offset screwdriver set **No. 10767a/13**: 0.05; 1/16; 5/64; 3/32; 7/64; 1/8; 9/64; 5/32; 3/16; 7/32; 1/4; 5/16; 3/8"
1 Split pin punch **No. 13009**: L.265 mm

96831109, TCS 13214A/1 WT/LM 6

22 Combination spanners OPEN BOX **No. 13a**: 3/16; 13/64; 7/32; 15/64; 1/4; 9/32; 5/16; 11/32; 3/8; 7/16; 1/2; 9/16; 19/32; 5/8; 11/16; 3/4; 25/32; 13/16; 7/8; 15/16; 1. 1/16"
6 Ratchet ring open-end spanners angled **No. 17a**: 1/4; 5/16; 3/8; 7/16; 1/2; 9/16"

96831102, TCS 13214/1 WT/LM 3

1 Caliper **No. 12900N**: L.150 mm
1 Telescopic mirror **No. 12921M**: L.178-921 mm
1 Water pump pliers FastGRIP **No. 6572**: L.240 mm
1 Wire twist pliers **No. 6575 1**: L.230 mm
1 Grip pliers **No. 6564 2**: L.175 mm
1 Electronic side cutter **No. 6707**: L.115 mm
1 Combination pliers **No. 6700**: L.160 mm
1 Telephone pliers **No. 6731**: L.200 mm

96831103, TCS 13214/1 WT/LM 4

4 Pin punches **No. 109**: 1.4; 2.8; 3.4; 3.9 mm
1 Locksmith's hammer **No. 10961**: 500 g
1 Soft-face hammer **No. 10959**: D.35 mm
1 Steel rule **No. 13110**: L.300 mm
1 Brass mandrel **No. 12495**: L.200 mm
1 Scriber **No. 12321**: L.250 mm
1 Pin magnetic lifter **No. 12601**: L.145 mm
1 Roller tape measure **No. 12935/3**: L.3 m
1 LED torch **No. 13128**: L.130 mm

Technical Attributes.

Number of tools	163 pcs.
Width mm (b)	581 mm
Height mm (h)	455 mm
Length mm (L)	381 mm

Logistics data.

Depth mm (IFS)	590
Width mm (IFS)	400
Height mm (IFS)	480
Length (packed, mm)	590
Width (packed, mm)	400
Height (packed, mm)	480
Volume (packed, dm3)	113.28 dm3
Art. no.	98814935
Weight (gross, kg)	29,500
Weight PAP (kg)	1,500
Weight PVC (kg)	0,000
GTIN	4018754348381
Country of origin	GERMANY
Region of origin	Nordrhein-Westfalen
WEEE/ElektroG	nicht ear-pflichtig
Customs tariff no.	82060000
Packing standard	1
Weight	28000 g

Parts list.



61015939
TCS insert



61015938
TCS insert



61015936
TCS insert



61015934
TCS insert



61015522
TCS insert



61015517
TCS insert



12021500
QR Cardan Joint



11021500
QR Cardan Joint



81091311



67313200
Telephone pliers



67003160
Combination pliers



46323303
Cross-head
screwdriver DRALL+



46323301
Cross-head
screwdriver DRALL+



46223555
Screwdriver for slotted
screws DRALL+



96080030
Bit box Air



72060204
Plastic scraper



72060203
Plastic scraper



72060202
Plastic scraper



72060201
Plastic scraper



12011510
QR Socket extension



12011503
QR Socket extension



11011506
QR Socket spanner
extension



11011502
QR Socket spanner
extension



96435700
Ball ended hexagon key
wrench



67076000
Electronic side cutter



41473434
OPEN RATCH
Combination ratchet
wrench



41473232
OPEN RATCH
Combination ratchet
wrench



41472828
OPEN RATCH
Combination ratchet
wrench



41472424
OPEN RATCH
Combination ratchet
wrench



41472020
OPEN RATCH
Combination ratchet
wrench



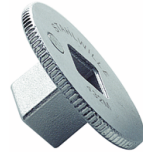
41471616
OPEN RATCH
Combination ratchet
wrench



77130000
Brass punch



12180030
Bit holder



12030010
Adapter



12030001
Adapter



11180010
Bit holder



11030010
Adapter



77592001
Round awl



74240002
Precision feeler gauges



65642175
Self grip wrench



77020000
Electricians cable knife



77100000
Scribing iron



77401057
Telescopic stainless
steel mirror



77371004
Tyre-tread Vernier
gauge



77460001
Steel rule



77040010
Tape measure



77371001
Vernier calliper



01530012
Sockets



01530014
Sockets



01530016
Sockets



01530018
Sockets



01530020
Sockets



01530022
Sockets



01530024
Sockets



01530028
Sockets



01530032
Sockets



01530034
Sockets



70090007
Pin punch



70090006
Pin punch



70090005
Pin punch



70090002
Pin punch



77101010
Splint pin hook



77101001
Hook



77401103
Claw lifter



70191035
Plastic hammer



70110011
Engineers hammers



65726240
Waterpump plier
FastGRIP



65751220
Wire twisting plier



46323002
Cross-head
screwdriver DRALL+



46223080
Screwdriver for slotted
screws DRALL+



11132020
Bit ratchet fine tooth



18120001
Bit ratchet screwdriver



12111020
QR fine-tooth ratchet



11111020
QR fine-tooth ratchet



11050011
Drive handle



12100005
QuickRelease speeder
brace



02420044
Socket



02420040
Socket



02420038
Socket



02420036
Socket



02410048
Socket



02410046
Socket



02410040
Socket



02410038
Socket



02410036
Socket



02410035
Socket



02410034
Socket



02410032
Socket



01540032
UNIFLEX sockets



01540028
UNIFLEX sockets



01540024
UNIFLEX sockets



01540020
UNIFLEX sockets



01540016
UNIFLEX sockets



01640034
Socket



01640032
Socket



01640028
Socket



01640024
Socket



01640022
Socket



01640020
Socket



01640018
Socket



01640016
Socket



01640014
Socket



01640012
Socket



40485252
Combination spanner
OPEN BOX



40485050
Combination spanner
OPEN BOX



40484848
Combination spanner
OPEN BOX



40484646
Combination spanner
OPEN BOX



40484444
Combination spanner
OPEN BOX



40484242
Combination spanner
OPEN BOX



40484141
Combination spanner
OPEN BOX



40484040
Combination spanner
OPEN BOX



40483838
Combination spanner
OPEN BOX



40483636
Combination spanner
OPEN BOX



40483535
Combination spanner
OPEN BOX



40483434
Combination spanner
OPEN BOX



40483232
Combination spanner
OPEN BOX



40482828
Combination spanner
OPEN BOX



40482424
Combination spanner
OPEN BOX



40482222
Combination spanner
OPEN BOX



40482020
Combination spanner
OPEN BOX



40481818
Combination spanner
OPEN BOX



40481616
Combination spanner
OPEN BOX



40481515
Combination spanner
OPEN BOX



40481414
Combination spanner
OPEN BOX



40481313
Combination spanner
OPEN BOX



40481212
Combination spanner
OPEN BOX



40250106
Adjustable spanner



77490006
LED torch



77260026
Pen magnet lifter

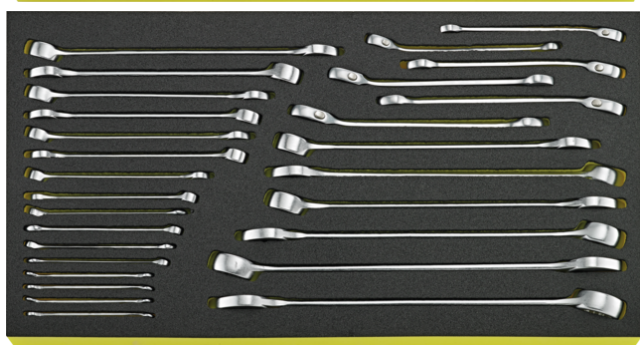
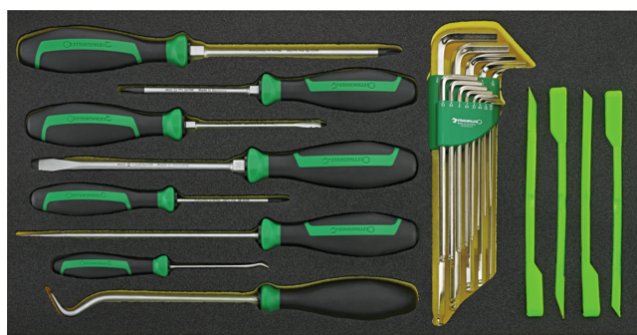
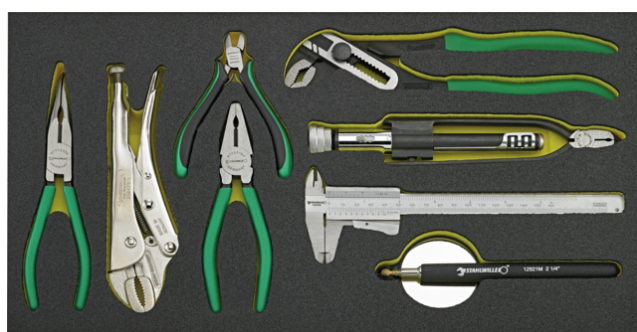
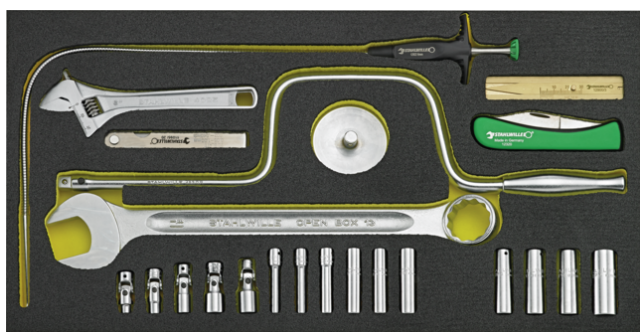
Variants.

Art. no.	Art. no. (ERP)	Description	GTIN
98814935	13214A/1 WT/LR	Line Maintenance Set (inch) in tool trolley no. 13217 13214A/1 WT/LR L.381mm W.581mm H.455mm 163 pcs.	4018754348381

GTIN-Code.



Images.



STAHLWILLE Eduard Wille GmbH & Co. KG

Lindenallee 27 · 42349 Wuppertal · Germany · Phone: +49 202 4791-0 · Fax: +49 202 4791-200
info@stahlwille.de · www.stahlwille.com · Copyright by STAHLWILLE Eduard Wille GmbH & Co. KG, Wuppertal
Copyright by STAHLWILLE Eduard Wille GmbH & Co. KG, Wuppertal