



## Tool trolley 95 PRO

### 95/6 PRO

Art.No. 81200160  
GTIN 4018754334636  
Model 95/6 A PRO

**Label.** Tool trolley 95/6 PRO 6 Drawers 496 x 827 x 1020 mm Anthracite, RAL 7016

- Features.**
- **three-stage safety concept:**
    1. central locking with a lateral cylinder lock and hinged key
    2. individual locks prevent inadvertent opening while in transit
    3. topple proof – it is not possible to pull out several drawers at the same time.
  - stainless steel handle with reinforced frame connection
  - all-round frame protection with shock absorption
  - tightly welded, resilient work surface, storage area, and end panel made of stainless steel
  - oil and acid-resistant ball-bearing smooth-running wheels (125 mm diameter) with thread guards to protect the bearings from dirt and threads, with two locking brakes
  - paper roller and spray can holder included
  - 6 easy-to-remove drawers (black RAL 9005) with full-extension and bearing cage guide
  - hole pattern on both sides for hooks No. 8031-8041, e.g., for larger tools
  - can be fitted with STAHLWILLE standard and TCS inserts

## Advantages.

Three-stage safety concept: 1. Central locking by side cylinder lock with folding key 2. Individual locks prevent inadvertent opening while in transit 3. Tilt protection – it is not possible to pull out several drawers at the same time.



## Product highlights.



### Resistant.

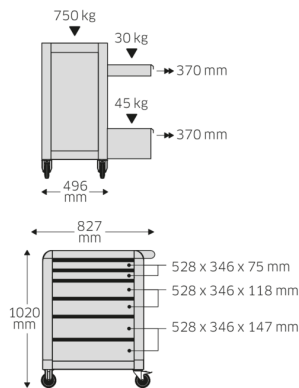
Oil and acid resistant smooth-running wheels (Ø 125 mm) with carpet protection to protect the bearings from dirt and fibres; with two locking brakes.



### Convenient.

All drawers can be extended up to 100%. Combining the use of STAHLWILLE standard and TCS inserts, or the variable drawer dividers, ensures a clear overview and convenient access to tools.

## Technical Drawing.



## Technical Attributes.

Number of drawers	6
Width mm (b)	827 mm
Colour	Anthracite, RAL 7016
Colour abbreviation	RAL 7016; RAL 9005
Height mm (h)	1020 mm
Length mm (L)	496 mm
No.	95/6 A PRO
Internal drawer dimensions mm	346 x 528 x 75 mm (2x) 346 x 528 x 118 mm (2x) 346 x 528 x 147 mm
Drawer load capacity	30 kg 30 kg 30/45 kg
Load capacity	750 kg

## Logistics data.

Depth mm (IFS)	720
Width mm (IFS)	496
Height mm (IFS)	863
Length (packed, mm)	836
Width (packed, mm)	587
Height (packed, mm)	940
Volume (packed, dm <sup>3</sup> )	461.28808 dm <sup>3</sup>
Art. no.	81200160
Weight (gross, kg)	79,000
Weight PAP (kg)	7,500
Weight PVC (kg)	0,000
GTIN	4018754334636
Country of origin	CHINA
Region of origin	Ausländischer Ursprung

WEEE/ElektroG	nicht ear-pflichtig
Customs tariff no.	94032080
Packing standard	1
Weight	71500 g

## Variants.

Art. no.	Art. no. (ERP)	Description	GTIN
81200160	95/6 A PRO	Tool trolley 95/6 PRO 6 Drawers 496 x 827 x 1020 mm Anthracite, RAL 7016	4018754334636
81200161	95/6 B PRO	Tool trolley 95/6 PRO 6 Drawers 496 x 827 x 1020 mm Blue, RAL 270 30 35	4018754334643
81200162	95/6 R PRO	Tool trolley 95/6 PRO 6 Drawers 496 x 827 x 1020 mm Red, RAL 3020	4018754334650

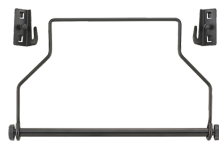
## GTIN-Code.



## Accessories.



90432727  
Spray can holder



81483004  
Paper roll holder



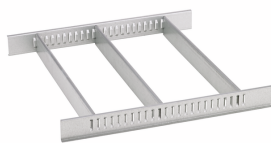
89010040  
Cable holder



83812070  
Empty tray for small  
components



81484001  
Drawer separator



81484002  
Drawer dividers



89010003  
Non-slip mat GRIPMAT

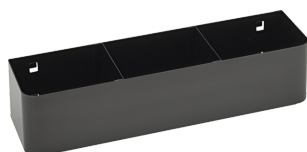


89011053  
Waste bin



89010042  
Laptop holder adaptor

## Spare parts/spare part for.



90432719  
Spray can holder



81490001  
Set of wheels

