



Tool trolley 95 PRO

95/7 PRO

Art.No. 81200163
GTIN 4018754334667
Model 95/7 A PRO

Label. Tool trolley 95/7 PRO 7 Drawers 496 x 827 x 1020 mm Anthracite, RAL 7016

- Features.**
- **three-stage safety concept:**
 1. central locking with a lateral cylinder lock and hinged key
 2. individual locks prevent inadvertent opening while in transit
 3. topple proof – it is not possible to pull out several drawers at the same time.
 - stainless steel handle with reinforced frame connection
 - all-round frame protection with shock absorption
 - tightly welded, resilient work surface, storage area, and end panel made of stainless steel
 - oil and acid-resistant ball-bearing smooth-running wheels (125 mm diameter) with thread guards to protect the bearings from dirt and threads, with two locking brakes
 - paper roller and spray can holder included
 - 7 easy-to-remove drawers (black RAL 9005) with full-extension runners and bearing cage guide
 - hole pattern on both sides for hooks No. 8031-8041, e.g., for larger tools
 - can be fitted with STAHLWILLE standard and TCS inserts

Advantages.

Three-stage safety concept: 1. Central locking by side cylinder lock with folding key 2. Individual locks prevent inadvertent opening while in transit 3. Tilt protection – it is not possible to pull out several drawers at the same time.



Product highlights.



Resistant.

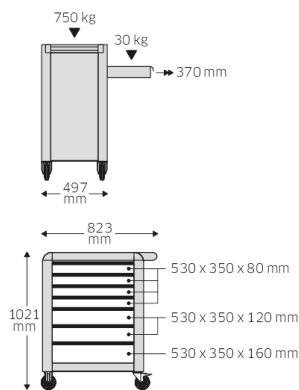
Oil and acid resistant smooth-running wheels (Ø 125 mm) with carpet protection to protect the bearings from dirt and fibres; with two locking brakes.



Convenient.

All drawers can be extended up to 100%. Combining the use of STAHLWILLE standard and TCS inserts, or the variable drawer dividers, ensures a clear overview and convenient access to tools.

Technical Drawing.



Technical Attributes.

Number of drawers	7
Width mm (b)	827 mm
Colour	Anthracite, RAL 7016
Colour abbreviation	RAL 7016; RAL 9005
Height mm (h)	1020 mm
Length mm (L)	496 mm
No.	95/7 A PRO
Internal drawer dimensions mm	346 x 528 x 75 mm (4x) 346 x 528 x 118 mm (2x) 346 x 528 x 134 mm (1x)
Drawer load capacity	30 kg 30 kg 45 kg
Load capacity	750 kg

Logistics data.

Depth mm (IFS)	720
Width mm (IFS)	496
Height mm (IFS)	863
Length (packed, mm)	836
Width (packed, mm)	587
Height (packed, mm)	940
Volume (packed, dm ³)	461.28808 dm ³
Art. no.	81200163
Weight (gross, kg)	79,000
Weight PAP (kg)	7,500
Weight PVC (kg)	0,000
GTIN	4018754334667
Country of origin	CHINA
Region of origin	Ausländischer Ursprung

WEEE/ElektroG	nicht ear-pflichtig
Customs tariff no.	94032080
Packing standard	1
Weight	71500 g

Variants.

Art. no.	Art. no. (ERP)	Description	GTIN
81200163	95/7 A PRO	Tool trolley 95/7 PRO 7 Drawers 496 x 827 x 1020 mm Anthracite, RAL 7016	4018754334667
81200164	95/7 B PRO	Tool trolley 95/7 PRO 7 Drawers 496 x 827 x 1020 mm Blue, RAL 270 30 35	4018754334674
81200165	95/7 R PRO	Tool trolley 95/7 PRO 7 Drawers 496 x 827 x 1020 mm Red, RAL 3020	4018754334681

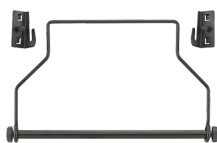
GTIN-Code.



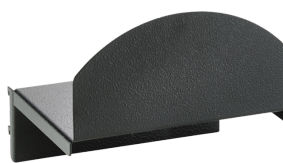
Accessories.



90432727
Spray can holder



81483004
Paper roll holder



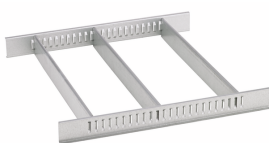
89010040
Cable holder



83812070
Empty tray for small components



81484001
Drawer separator



81484002
Drawer dividers



89010003
Non-slip mat GRIPMAT

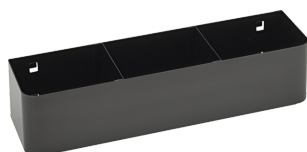


89011053
Waste bin



89010042
Laptop holder adaptor

Spare parts/spare part for.



90432719
Spray can holder



81490001
Set of wheels

Images.



STAHLWILLE Eduard Wille GmbH & Co. KG

Lindenallee 27 · 42349 Wuppertal · Germany · Phone: +49 202 4791-0 · Fax: +49 202 4791-200

info@stahlwille.de · www.stahlwille.com · Copyright by STAHLWILLE Eduard Wille GmbH & Co. KG, Wuppertal

Copyright by STAHLWILLE Eduard Wille GmbH & Co. KG, Wuppertal