

Sockets spline-drive

40aLSP



Art.No. **01021010**
GTIN **4018754170869**
Model **40AL SP10 = 5/16**



Label. 1/4" Sockets spline-drive size 5/16" L.50,8mm

- Features.**
- for external spline-drive screws
 - extra deep
 - bolt clearance
 - MS-33787, MIL-W-8982
 - HPQ® high performance steel, chrome plated

Advantages.

For external spline drive screws

STAHLWILLE: For over 160 years, we as a traditional German company from Wuppertal have stood for tools that are appreciated around the world for their excellent quality

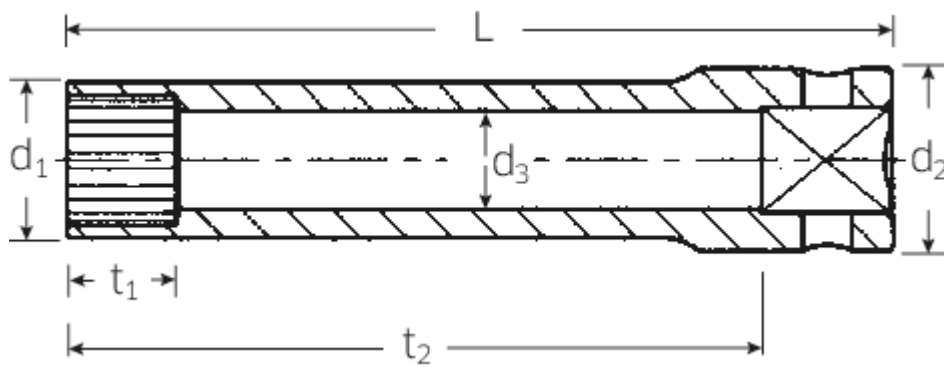
Technologies and features.



High Performance Quality (HPQ®)

High-performance steel, extremely resilient, yet thin-walled and ideal for working in confined spaces.

Technical Drawing.



Technical Attributes.

Output profile	Spline-drive
Drive square internal (inch)	1/4"
d1	11,6 mm
d2	11,6 mm
d3	7,1 mm
Size Output profile	10
Length mm (L)	50,8 mm
Size [inch]	5/16 "
t1	8 mm
t2	40,8 mm

Logistics data.

Length (IFS)	105
Width (IFS)	28
Height (IFS)	15
Length (packed, mm)	105
Width (packed, mm)	28
Height (packed, mm)	15
Volume (packed, mm)	0.0441 dm ³
Code	01021010
Weight (gross, kg)	0,027
Weight PAP (kg)	0,000
Weight PVC (kg)	0,002
GTIN	4018754170869
Country of origin	GERMANY
Region of origin	Nordrhein-Westfalen
WEEE/Electrical Act	nicht ear-pflichtig
Customs tariff no.	82042000
Numbers of content units per order units	1
Weight	27 g

Variants.

Code	Article number (ERP)	Article description (Autom._)	GTIN
01021007	40AL SP 7 = 7/32	1/4" Sockets spline-drive size 7/32" L.50,8mm	4018754170852
01021008	40AL SP 8 = 1/4	1/4" Sockets spline-drive size 1/4" L.50,8mm	4018754109135

01021010

40AL SP10 = 5/16

1/4" Sockets spline-drive size 5/16" L.50,8mm

4018754170869

GTIN-Code.



STAHLWILLE Eduard Wille GmbH & Co. KG

Lindenallee 27 · 42349 Wuppertal · Germany · Phone: +49 202 4791-0 · Fax: +49 202 4791-200
info@stahlwille.de · www.stahlwille.de · Copyright by STAHLWILLE Eduard Wille GmbH & Co. KG, Wuppertal
Copyright by STAHLWILLE Eduard Wille GmbH & Co. KG, Wuppertal